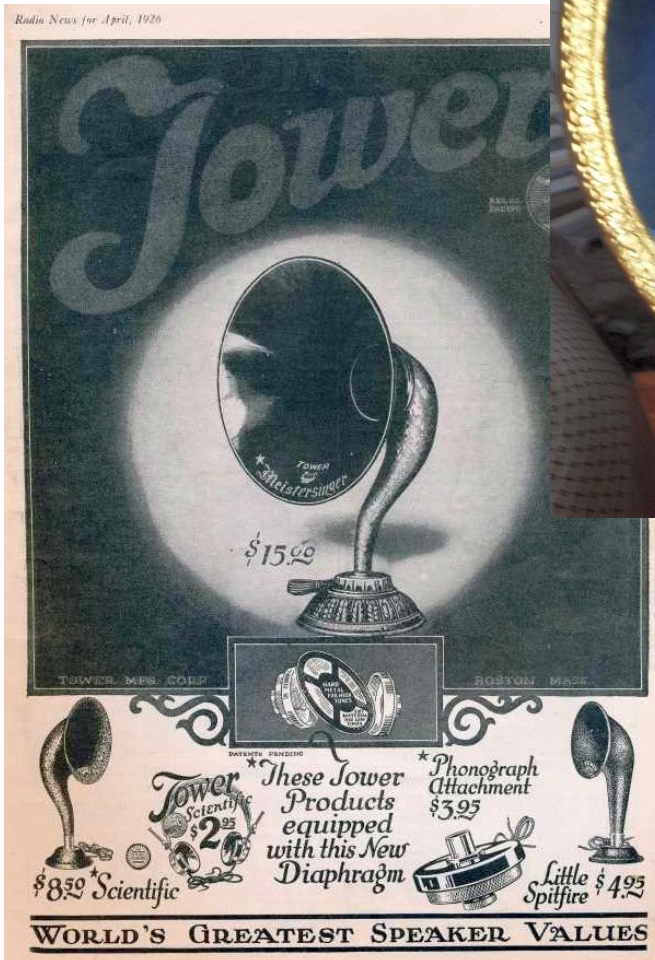


1927 – Ship “Santa Maria”

The Loudspeaker

Categoria / Category: Altifalante de Cone / Cone loudspeaker

Fabricante / *Maker*: Tower Mfg. Co., Boston, USA.
 Modelo / *Model*: Ship Santa Maria.
 Princípio / *Principle*: Cone.
 Formato / *Shape*: Modelo de mesa / *Table model*.
 Motor / *Driver*: Eletroímã e lâmina de aço /
Electromagnet and steel reed.
 Materiais / *Materials*: Iron, steel and paper.
 Produzido / *Produced*: 1927.
 Dimensões / *Dimensions*: 450 mm.
 Peso: / *Weight*: 5 kg.
 Impedância / *Impedance*: 1350 Ω.



História / History:

1. The company Tower Mfg. Co., Boston, Massachusetts, USA, was a small manufacturer that produced loudspeakers between 1925 and 1927.
2. Tower manufactured some types of more common horn loudspeakers, but its most emblematic loudspeakers and sought after by collectors are the Castle, the Adventurer and the Santa Maria models, which are circular in shape and made of cast iron. The decorative motifs on these speakers are reproductions of castles and caravels, in particular the "Santa Maria" used by Christopher Columbus.